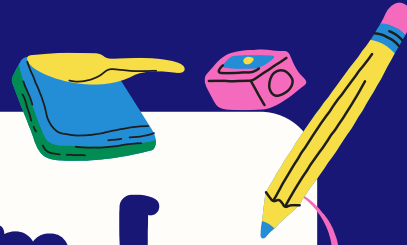


Year R Term 5

Sunshine and Sunflowers, Wriggle and Crawl

Does everything grow in the same way?



Focus Phonics



ow ee

ur ai

or oa

Events and Reminders

Kearsney Abbey Walk 19th May

Forest School 23rd April

Yoga - 29th April and 13th May

Our PE days are **Wednesday**.

Children should have their PE kit stored in their locker.



This Term we are learning...

Communication and Language - Begin to answer questions about a story

Maths - Building and counting beyond 10 and 3D shapes

Understanding the world - Observe the growth of seeds and talk about changes

RE - Where do we belong?

PE - Movement Patterns

PSED - Relationships

Expressive Art and Design - Portraits and observational drawing

Computing - Communication through the internet

Music - Respond to music through movement

We are reading...

